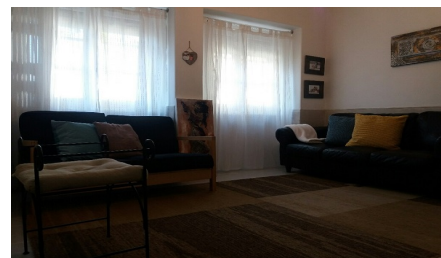


## 2 Bedroom Apartment in Alvalade

€320,000

Ref: BPL2054



### Cosy 2 bed apartment with garage and vegetable Garden, in Alvalade

Ground floor apartment, comprises: 1 living room, 2 bedrooms, 1 bathroom and 1 kitchen Garage and a small vegetable Garden in the back Great investment not to be missed!

#### Property Features

- 2 Bedrooms
- 1 Bathrooms
- Construction Size: 54 m<sup>2</sup>
- Air Conditioning
- Close to Town
- Parking: Private Garage