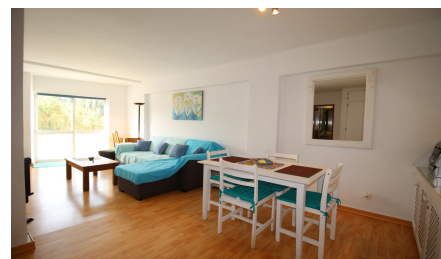


2 Bedroom Apartment in Espiche

€125,000

Ref: BPA3054



Charming 2 bedroom apartment in Espiche, within walking distance to all amenities and just a few minutes drive to Praia da Luz and beaches.

Located in Espiche, this 2 bedroom apartment has all amenities at the door step and is just a few minutes drive from Praia da Luz and local beaches. The accommodation is well maintained comprising a lounge & dining area, a fully fitted kitchen, 2 double bedrooms and a family bathroom. There is a private patio at the entrance of the apartment with a locked storage room under the staircase. The lounge windows open to a balcony facing the village. Further features include: double glazing and air conditioning installed. This charming apartment is ideal as a holiday home with a great potential as a rental income property.

Property Features

- 2 Bedrooms
- 1 Bathrooms
- Construction Year: 2000
- Construction Size: 66 m²
- Air Conditioning
- Balcony
- Storage Facility
- Walking distance to amenities
- Close to Beach
- Double Glazing