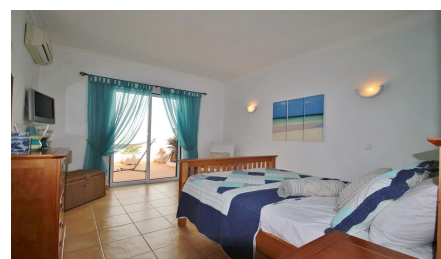


## 2 Bedroom Townhouse in Espiche

€229,000

Ref: BPA5266



**A cosy and well maintained 2 bedroom Townhouse in Espiche, just 5 minutes away from Praia da Luz.**

A cosy and well maintained 2 bedroom townhouse set in a peaceful neighborhood, located in Espiche, at a walking distance to all amenities such as local markets, shops and restaurants, only 5 minutes drive from Praia da Luz or the Espiche Golf Course. From a front patio, we walk into a hall that brings to the living and dining area, a fully fitted kitchen with a pantry, two double bedrooms and a family bathroom. At the back there is a lovely ground level terrace with a pot garden and dining area, a roof terrace with sun loungers area. Further features include double glazing, inverted cooling and heating inverted system installed, fitted wardrobe, closed wood burner fireplace. This townhouse is perfect for a lovely holiday and retirement home or an ideal rental income property.

### Property Features

- 2 Bedrooms
- 1 Bathrooms
- Construction Year: 2006
- Construction Size: 91 m<sup>2</sup>
- Plot Size: 141 m<sup>2</sup>
- Air Conditioning
- Private Roof Terrace
- Storage Facility
- Terrace
- Walking distance to amenities
- Close to Beach
- Double Glazing