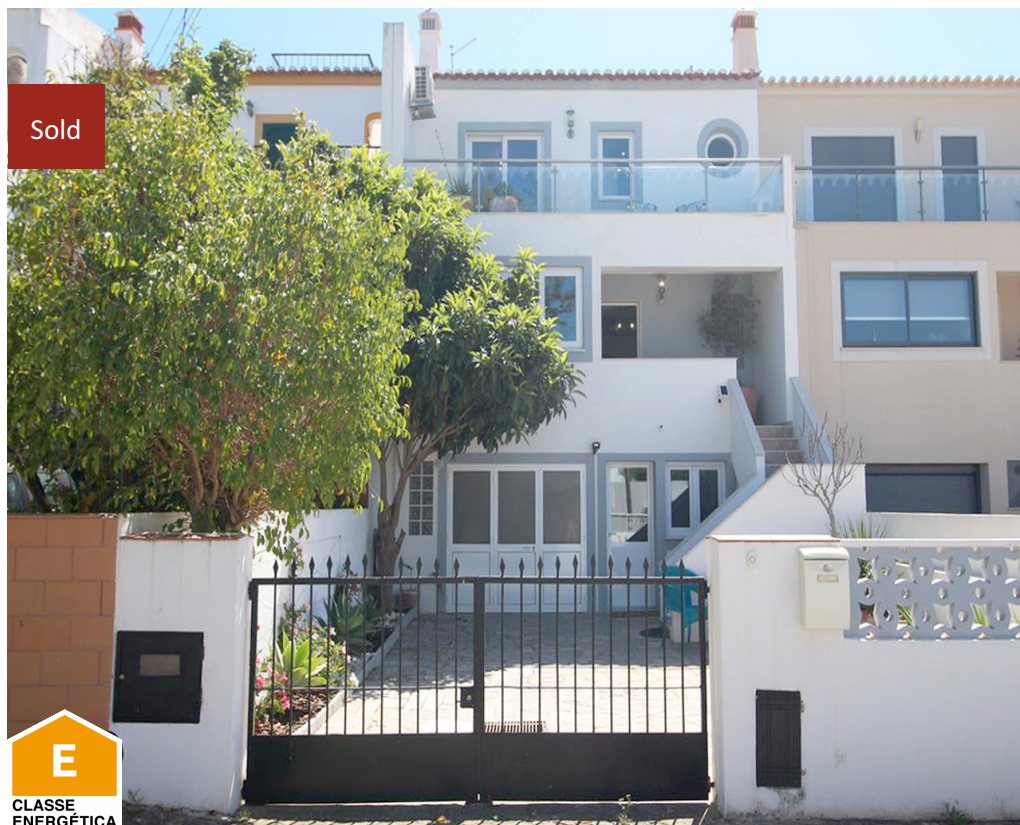


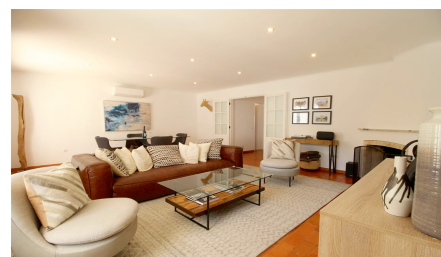
## 4 Bedroom Townhouse in Torraltinha

€469,000

Ref: BPA5306



Sold



**Wonderfully renovated linked villa, offering great quality with a traditional ambience, and a fantastic central location in Lagos.**

Located in a quiet residential area close to the old town, this home is walking distance to all amenities, beaches, Ponte de Piedade walking paths & lighthouse, restaurants and cafes. Access to the house is through a pretty front patio that also offers off-street parking for one car. The main living area is spread over 2 levels with the first floor offering an entrance hall with beautifully refinished original floors, a modern fully equipped kitchen, a contemporary lounge dining area that flows through two sets of French doors to a lovely low-maintenance private garden with a jacuzzi and fruit trees. The first floor also offers a guest bathroom and pantry storage area. The upper floor hosts 3 large bedrooms. The master bedroom has a private ensuite bathroom, large walk-in closet and a sunny private terrace with rooftop and mountain views. The 2 other bedrooms have fitted wardrobes, direct access to a large covered terrace, and share a fully renovated modern bathroom. The villa has a garage with laundry on the ground floor, as well as a fully renovated self-contained one-bedroom apartment with an open plan kitchen, living / dining area, closet, and bathroom, all ready to welcome your guests. Further features include: log burner in the living room, heating and air conditioning throughout the house and guest apartment, integrated appliances (all appliances and heating/AC units are less than 2 years old). This charming villa is ideal as a main residence or a rental income property. This is also a great Golden visa

### Property Features

- 4 Bedrooms
- 3 Bathrooms
- Construction Year: 1978
- Construction Size: 148 m<sup>2</sup>
- Plot Size: 203 m<sup>2</sup>
- Air Conditioning
- Fireplace
- Private Patio
- Annex
- Solar Panels
- Terrace
- Jacuzzi
- Walking distance to amenities
- Close to Beach
- Double Glazing
- Parking: Private Garage