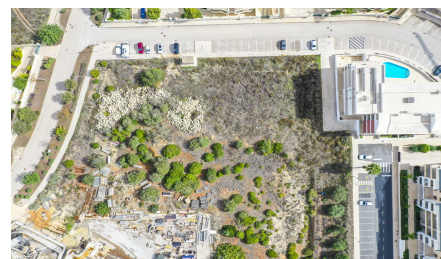


Plot in Porto de Mos

€5,000,000

Ref: BPA4282



OPPORTUNITY: A plot of land located between in the hugely sought after Porto de Mos, with permission to build a condominium of 56 apartments and commercial shops, with communal swimming pool, boasting an lovely sea view.

In a fabulous location this plots has planning for an apartment complex with commercial space. The total construction area is 5,730 m², across 3 floors and a basement with 6, 1 bedroom apartments, 44, 2 bedroom apartment, and 6, 3 bedroom apartments. As well as a further 1,000 m² of commercial space, perfect for shops, cafes or restaurants. This needs to be viewed to appreciate the location, just a short walk to Porto de Mos beach

Property Features

- Plot Size: 9,068 m²
- Close to Beach
- Close to Town
- Walking distance to the beach